

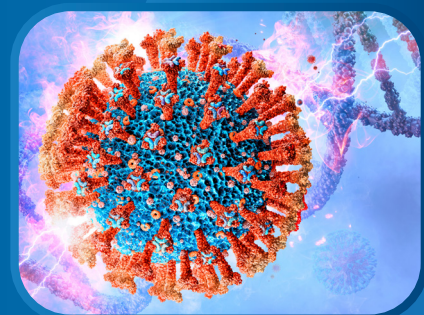
**ESCO**  
LIFESCIENCES



# Labculture® G4

**Class II Type A2 Biological Safety Cabinets**

*The Most Advanced Energy-efficient, Safe,  
and Ergonomic Biosafety Cabinet in the World*



# LABCULTURE® G4 (LA2 G4) CLASS II TYPE A2 BIOSAFETY



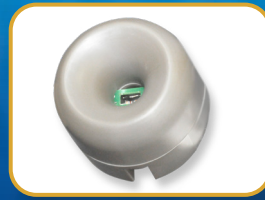
## USB Port

- Export Data Logging
- Software Update
- Wired data transaction to BMS



## Zero Volt Relay Contact

- Free Relay Contact
- Exhaust Free Relay Contact



## Airflow Sensor

- Monitors real-time airflow for safety
- Alert the user if airflow is insufficient



## Centurion 7" Capacitive Touchscreen Controller

- Displays all safety information on one large screen
- Shows cabinet parameters with intuitive 3D illustration
- Easy to use menu, similar to Smart Phone Apps
- Large buttons, easy to operate when wearing gloves
- Self-guidance to users to deal with specific situations
- Centered and angled down for easy reach and viewing
- Optional: 21 CFR Part 11 Compliance
- Wired data transaction to BMS



## Single Piece Wall

- Easy to reach service fixtures and electrical outlets on sidewalls
- Large radius corners for easy cleaning



## User-friendly Work Tray

- Largest useable area in the market
- Recessed to contain spillage
- Sloped perimeter for easy cleaning
- Large, easy to clean tray handle
- Work tray holder for drain pan cleaning



## Raised Arm Rest

- Prevent grille blocking
- Comfortable working posture
- Durable stainless steel construction



## Ergonomic Work Zone

- 10° angle to optimize user comfort, reduce glare, and maximize reach into the work area
- Brightly illuminated with >1200 lux (111 ft. cd)
- Industry-leading dimmable LED for optimum work comfort
- Airtight seal port for cable/tube exit protected by a negative pressure side wall



Esco Labculture® G4 Class II Type A2 Biosafety Cabinet  
Available in 3 feet, 4 feet, 5 feet, and 6 feet models.

Standards  
Compliance

# CABINET, FEATURING ADVANCED TOUCHSCREEN CONTROLLER

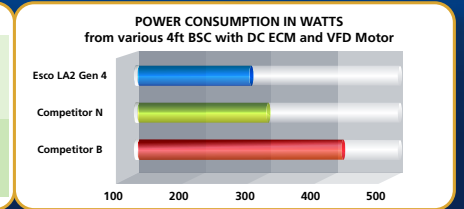
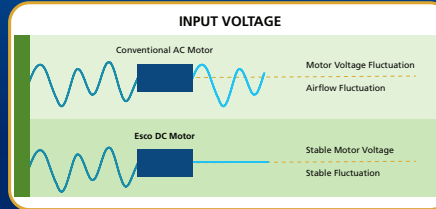


## Power Inlet socket

- Electrically easy to install with plug and play design

## Energy-efficient DC ECM Blower

- The leading energy efficient Class II Type A2 Biosafety Cabinet in the world with 70% energy savings compared to AC motor
- Stable airflow despite building voltage fluctuations and filter loading
- Standby mode to further reduce power consumption by 80%



## Advanced ULPA Filtration System

- 10x Filtration efficiency of HEPA filter
- Creates ISO Class 3 work zone instead of industry-standard ISO Class 5
- Same 10 years filter life and replacement cost as HEPA filters

Note:

- 99.999% at 0.1 to 0.3 micron, ULPA as per IEST-RP-CC001.3 USA
- 99.999% at MPPS, H14 as per EN 1822 EU



## Dimmable LED

- Save energy and optimize work comfort



## Removable Paper Catch

- Prevent objects from being pulled into blower plenum
- Removable for easy cleaning
- Optional pre-filter can be fitted



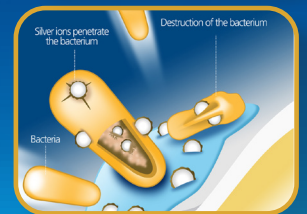
## User Modified Pass-Through / Cable Port

- 3" Port with 1/4" hole on rubber membrane inside
- Surrounded by negative pressure
- Allows cables and tubes to exit with fully closed sash



## Tray Support Beams

- Support work tray evenly for less vibration
- Cleaning holder to easily wipe the drain pan



## ISOCIDE™ Powder Coat

- Silver-ion impregnated powder coat
- Inhibits microbial growth to improve safety
- Prevents the plenum from becoming biohazard landfill

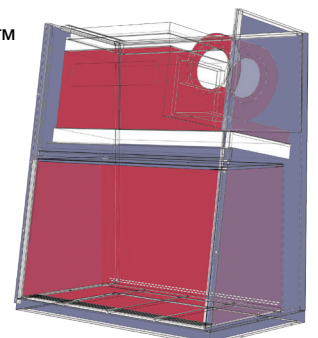
## Certification

| Performance        | Air Quality  | Filtration                                  | Electrical Safety   | Electromagnetic Compatibility (EMC) |
|--------------------|--|---|---|-------------------------------------|
| NSF / ANSI 49, USA | ISO 14644.1, Class 3, Worldwide<br>US Fed Std 209E, Class 1 USA<br>JIS B9920, Class 3, Japan | EN-1822 (H14), Europe<br>IEST-RP-CC001, USA | UL 61010-1 3rd Ed, USA<br>CSA22.2, No.1010-192, Canada<br>IEC61010-1, Worldwide | EN IEC 61326-1 Group 1 / Class A    |

## Dynamic Chamber™

- Blower plenum and side walls are surrounded by negative pressure
- Prevent contaminants from escaping outside

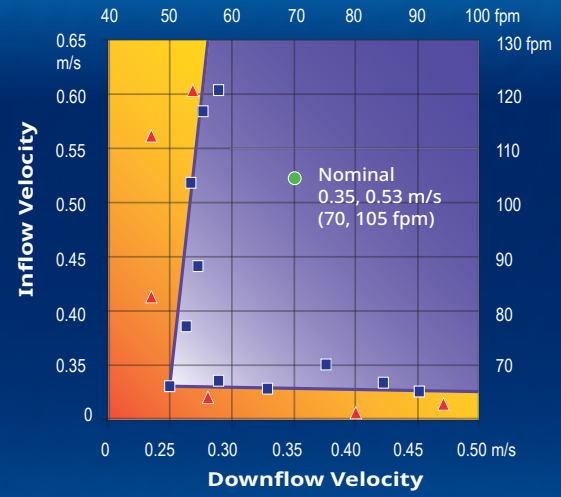
- Positive Pressure
- Negative Pressure



## Cabinet Filtration System

- Ambient air is pulled through front grille to create inflow, without going into the work surface. Inflow is joined by half of the downflow, to create front air curtain that is fine-tuned to create a large performance envelope. The combined air stream travels through the back air column towards the blower.
- Approximately 1/3 of the air in the common plenum is exhausted through the ULPA filter to the room. The remaining 2/3 of the air is passed through the downflow ULPA filter and into the work area as a vertical laminar flow air to create ISO Class 3 work surface and prevents cross contamination.
- Near the work surface, the downflow splits. About half goes to the front grille, and half goes to the rear grille. A small portion enters the side capture zones to prevent dead air corners (small blue arrows).
- The design was optimized to give large performance envelope, that provides operator and product protection at wide Inflow and Downflow variation from the Nominal point.

## The Performance Envelope Concept



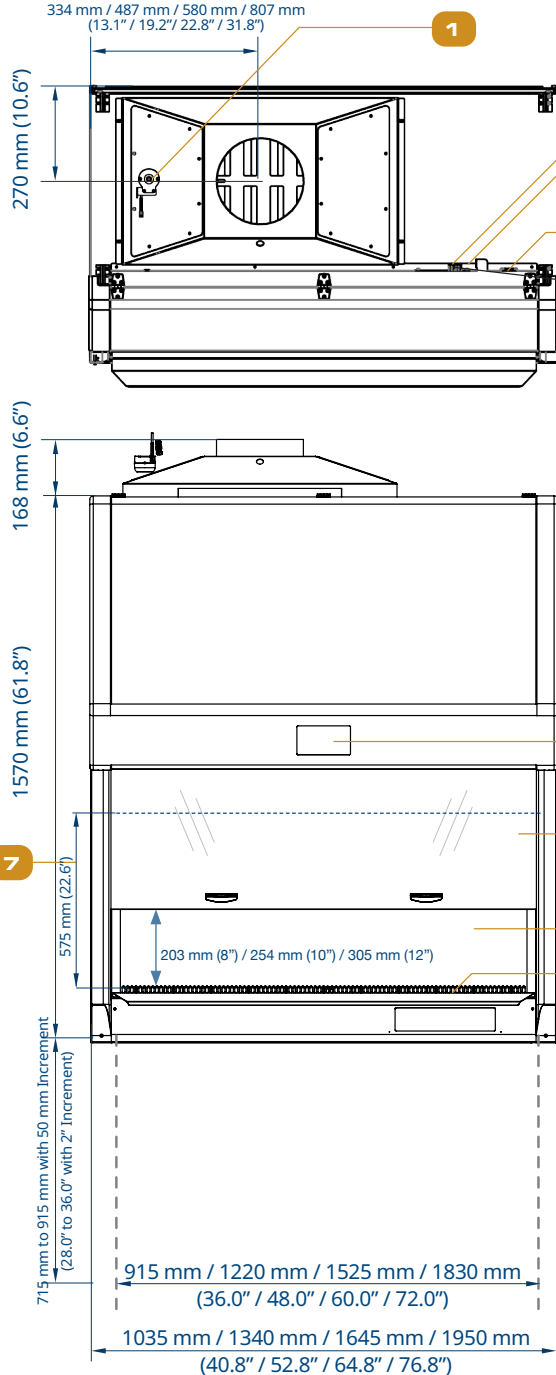
- Nominal Airflow
- ▲ No Personnel / Product Protection
- Personnel / Product Protection
- Area of Personnel / Product Protection
- Area of no Personnel / Product Protection

Dynamic air barrier, where inflow and downflow converge

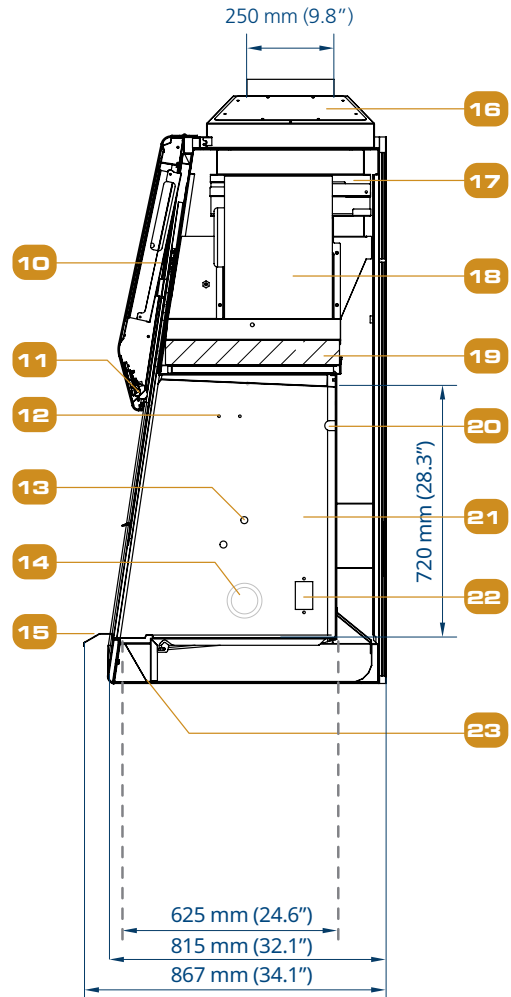
Side capture zones

- ULPA-filtered air
- Unfiltered / potentially contaminated air
- Room air / Inflow air

## Engineering Drawing



1. Exhaust sensor
2. USB Port
3. Zero Volt Relay Contact
4. Power Inlet (1qty for 3-4 ft, 2qty for 5-6 ft)
5. Centurion Touchscreen Controller
6. 10° Angled Sash Window
7. Maximum Sash Opening
8. Single-piece Stainless Steel Back Wall
9. Single tray for S-series and Multi tray for E-series
10. Electrical Panel
11. Dimmable LED Lamp
12. IV Bar Retrofit Kit Provision
13. Service Fixture Retrofit Kit Provision
14. Cable Port (NSF Approved)
15. Stainless Steel Arm Rest
16. Exhaust Collar (optional)
17. Exhaust Filter
18. DC ECM Blower
19. Downflow Filter
20. UV Lamp Provision
21. Stainless steel side walls for S-series and Glass side walls for E-series
22. Electrical Outlet Provision
23. Drain valve provision



## TECHNICAL SPECIFICATIONS

| Labculture® Class II  |  | Stainless Steel Side Walls  | 220-240 VAC, 50/60 Hz                        |  | 220-240 VAC, 50/60 Hz                        |  | 220-240 VAC, 50/60 Hz            |  |  |  |  |                                  |                                  |
|---|--|---|--|--|--|--|----------------------------------|--|--|--|--|----------------------------------|----------------------------------|
|   |  |   | LA2-3S8 G4 8" 2011666                        | LA2-4S8 G4 8" 2011668                        | LA2-5S8 G4 8" 2011670                        | LA2-6S8 G4 8" 2011672                        | LA2-3S8 G4 10" 2011682           | LA2-4S8 G4 10" 2011684                       | LA2-5S8 G4 10" 2011686                       | LA2-6S8 G4 10" 2011688                       |  |                                  |                                  |
| Nominal Size  |  | 110-130 VAC, 50/60 Hz   |  | 110-130 VAC, 50/60 Hz                        |  | 110-130 VAC, 50/60 Hz                        |                                  | 110-130 VAC, 50/60 Hz                        |  |  |  |                                  |                                  |
|   |  | LA2-3S9 G4 8" 2011667   | LA2-4S9 G4 8" 2011669                        | LA2-5S9 G4 8" 2011671                        | LA2-6S9 G4 8" 2011673                        | LA2-3S9 G4 10" 2011683                       | LA2-4S9 G4 10" 2011685           | LA2-5S9 G4 10" 2011687                       | LA2-6S9 G4 10" 2011689                       |  |  |                                  |                                  |
| External Dimensions (W x D x H)   |  | Without Arm Rest  | 1035 x 815 x 1580 mm (40.8" x 32.1" x 62.2") | 1340 x 815 x 1580 mm (52.8" x 32.1" x 62.2") | 1645 x 815 x 1580 mm (64.8" x 32.1" x 62.2") | 1950 x 815 x 1580 mm (76.8" x 32.1" x 62.2") | With Arm Rest                    | 1035 x 867 x 1580 mm (40.8" x 34.1" x 62.2") | 1340 x 867 x 1580 mm (52.8" x 34.1" x 62.2") | 1645 x 867 x 1580 mm (64.8" x 34.1" x 62.2") | 1950 x 867 x 1580 mm (76.8" x 34.1" x 62.2") |                                  |                                  |
| Internal Dimensions (W x D x H)   |  | 915 x 625 x 720 mm (36.0" x 24.6" x 28.3")  |  | 1220 x 625 x 720 mm (48.0" x 24.6" x 28.3")  |  | 1525 x 625 x 720 mm (60.0" x 24.6" x 28.3")  |                                  | 1830 x 625 x 720 mm (72.0" x 24.6" x 28.3")  |  |  |  |                                  |                                  |
| Usable Work Area  |  | 0.47 m <sup>2</sup> (5.0 sq. ft.)   |  | 0.63 m <sup>2</sup> (6.8 sq. ft.)            |  | 0.79 m <sup>2</sup> (8.5 sq. ft.)            |                                  | 0.94 m <sup>2</sup> (10.3 sq. ft.)           |  |  |  |                                  |                                  |
| Sash opening  |  | Available in 203 mm (8"), 254 mm (10"), and 305 mm (12")  |  |  |  |  |                                  |  |  |  |  |                                  |                                  |
| Maximum Sash Opening  |  | 575 mm (22.6")  |  |  |  |  |                                  |  |  |  |  |                                  |                                  |
| Average Airflow Velocity  |  | Inflow  | 203 mm (8")                                  | 0.53 m/s (105 fpm)                           |  |  |                                  |  |  |  |  |                                  |                                  |
|   |  |   | 254 mm (10")                                 | 0.53 m/s (105 fpm)                           |  |  |                                  |  |  |  |  |                                  |                                  |
|   |  |   | 305 mm (12")                                 | 0.53 m/s (105 fpm)                           |  |  |                                  |  |  |  |  |                                  |                                  |
| Airflow Volume  |  | Downflow  | 203 mm (8")                                  | 0.30 m/s (60 fpm)                            | 0.30 m/s (60 fpm)                            | 0.30 m/s (60 fpm)                            | 0.30 m/s (60 fpm)                | 0.30 m/s (60 fpm)                            | 0.30 m/s (60 fpm)                            |  |  |                                  |                                  |
|   |  |   | 254 mm (10")                                 | 0.33 m/s (65 fpm)                            | 0.30 m/s (60 fpm)                            | 0.33 m/s (65 fpm)                            | 0.33 m/s (65 fpm)                | 0.30 m/s (60 fpm)                            | 0.33 m/s (65 fpm)                            |  |  |                                  |                                  |
|   |  |   | 305 mm (12")                                 | 0.35 m/s (70 fpm)                            | 0.30 m/s (60 fpm)                            | 0.35 m/s (70 fpm)                            | 0.35 m/s (70 fpm)                | 0.35 m/s (70 fpm)                            | 0.35 m/s (70 fpm)                            |  |  |                                  |                                  |
| Airflow Volume  |  | Inflow  | 203 mm (8")                                  | 356 m <sup>3</sup> /h (210 cfm)              | 473 m <sup>3</sup> /h (280 cfm)              | 593 m <sup>3</sup> /h (350 cfm)              | 709 m <sup>3</sup> /h (420 cfm)  | 254 mm (10")                                 | 446 m <sup>3</sup> /h (263 cfm)              | 591 m <sup>3</sup> /h (350 cfm)              | 741 m <sup>3</sup> /h (438 cfm)              | 887 m <sup>3</sup> /h (525 cfm)  |                                  |
|   |  |   | 305 mm (12")                                 | 535 m <sup>3</sup> /h (315 cfm)              | 710 m <sup>3</sup> /h (420 cfm)              | 890 m <sup>3</sup> /h (525 cfm)              | 1065 m <sup>3</sup> /h (629 cfm) | 203 mm (8")                                  | 581 m <sup>3</sup> /h (345 cfm)              | 771 m <sup>3</sup> /h (461 cfm)              | 967 m <sup>3</sup> /h (567 cfm)              | 1156 m <sup>3</sup> /h (691 cfm) |                                  |
|   |  |   | 254 mm (10")                                 | 639 m <sup>3</sup> /h (374 cfm)              | 848 m <sup>3</sup> /h (499 cfm)              | 1063 m <sup>3</sup> /h (624 cfm)             | 1272 m <sup>3</sup> /h (748 cfm) | 305 mm (12")                                 | 678 m <sup>3</sup> /h (397 cfm)              | 771 m <sup>3</sup> /h (461 cfm)              | 1128 m <sup>3</sup> /h (662 cfm)             | 1349 m <sup>3</sup> /h (794 cfm) |                                  |
|   |  | Exhaust   |  | 203 mm (8")                                  | 356 m <sup>3</sup> /h (210 cfm)              | 473 m <sup>3</sup> /h (280 cfm)              | 593 m <sup>3</sup> /h (350 cfm)  | 709 m <sup>3</sup> /h (420 cfm)              | 254 mm (10")                                 | 446 m <sup>3</sup> /h (263 cfm)              | 591 m <sup>3</sup> /h (350 cfm)              | 741 m <sup>3</sup> /h (438 cfm)  | 887 m <sup>3</sup> /h (525 cfm)  |
|   |  |   |  | 305 mm (12")                                 | 535 m <sup>3</sup> /h (315 cfm)              | 710 m <sup>3</sup> /h (420 cfm)              | 890 m <sup>3</sup> /h (525 cfm)  | 1065 m <sup>3</sup> /h (629 cfm)             | 203 mm (8")                                  | 581 m <sup>3</sup> /h (345 cfm)              | 771 m <sup>3</sup> /h (461 cfm)              | 967 m <sup>3</sup> /h (567 cfm)  | 1156 m <sup>3</sup> /h (691 cfm) |
|   |  |   |  | 254 mm (10")                                 | 639 m <sup>3</sup> /h (374 cfm)              | 848 m <sup>3</sup> /h (499 cfm)              | 1063 m <sup>3</sup> /h (624 cfm) | 1272 m <sup>3</sup> /h (748 cfm)             | 305 mm (12")                                 | 678 m <sup>3</sup> /h (397 cfm)              | 771 m <sup>3</sup> /h (461 cfm)              | 1128 m <sup>3</sup> /h (662 cfm) | 1349 m <sup>3</sup> /h (794 cfm) |
| Additional Static Pressure for Optional Thimble Exhaust Collar (Measured 360mm or 14" from the top of exhaust collar) |  | 203 mm (8")   | 15-25 Pa                                     | 25-35 Pa                                     | 20-30 Pa                                     | 40-50 Pa                                     | 254 mm (10")                     | 20-30 Pa                                     | 35-45 Pa                                     | 25-35 Pa                                     | 55-65 Pa                                     |                                  |                                  |
| Required Exhaust with Optional Thimble Exhaust Collar   |  | 203 mm (8")   | 390 m <sup>3</sup> /h (230 cfm)              | 529 m <sup>3</sup> /h (311 cfm)              | 622 m <sup>3</sup> /h (366 cfm)              | 780 m <sup>3</sup> /h (459 cfm)              | 254 mm (10")                     | 480 m <sup>3</sup> /h (283 cfm)              | 637 m <sup>3</sup> /h (375 cfm)              | 770 m <sup>3</sup> /h (453 cfm)              | 944 m <sup>3</sup> /h (556 cfm)              |                                  |                                  |
| ULPA Filter Typical Efficiency  |  | >99.999% at 0.1 to 0.3 micron, ULPA as per IEST-RP-CC001.3 USA<br>>99.999% at MPPS, H14 as per EN 1822 EU |  |  |  |  |                                  |  |  |  |  |                                  |                                  |
| Sound Emission (dBA)*   |  | NSF / ANSI 49   | 203 mm (8")                                  | 57   | 57   | 60   | 63                               | 254 mm (10")                                 | 60   | 59   | 63   |                                  |                                  |
|   |  |   | 305 mm (12")                                 | 62   | 60   | 65   | 65.9                             |  |  |  |  |                                  |                                  |
| LED Lamp Light Intensity  |  | ≥ 1000 lux (92 ft-cd)   |  |  |  |  |                                  |  |  |  |  |                                  |                                  |
| Electrical Rating (8)**<br>220-240 VAC<br>50/60Hz   |  | Nominal power (Watt)  | 203 mm (8")                                  | 160  | 190  | 350  | 366                              | 254 mm (10")                                 | 195  | 201  | 374  | 420                              |                                  |
|   |  |   | 305 mm (12")                                 | 228  | 236  | 455  | 550                              | 203 mm (8")                                  | 546  | 648  | 1194   | 1249                             |                                  |
|   |  |   | 254 mm (10")                                 | 665  | 686  | 1276   | 1433                             | 305 mm (12")                                 | 778  | 805  | 1553   | 1877                             |                                  |
|   |  | Full Load Amps exclude 5A EO  | 203 mm (8")                                  | 6 A  |  |  |                                  | 10 A   |  |  |  |                                  |                                  |
|   |  |   | 254 mm (10")                                 |  |  |  |                                  |  |  |  |  |                                  |                                  |
|   |  |   | 305 mm (12")                                 |  |  |  |                                  |  |  |  |  |                                  |                                  |
| Electrical Rating (9)**<br>110-130 VAC<br>50/60Hz   |  | Nominal power (Watt)  | 203 mm (8")                                  | 163  | 193  | 355  | 372                              | 254 mm (10")                                 | 203  | 205  | 380  | 421                              |                                  |
|   |  |   | 305 mm (12")                                 | 232  | 240  | 380  | 537                              | 203 mm (8")                                  | 556  | 659  | 1211   | 1269                             |                                  |
|   |  |   | 254 mm (10")                                 | 693  | 699  | 1297   | 1471                             | 305 mm (12")                                 | 792  | 819  | 1570   | 1832                             |                                  |
|   |  | Full Load Amps exclude 5A EO  | 203 mm (8")                                  | 10 A   |  |  |                                  | 16 A   |  |  |  |                                  |                                  |
|   |  |   | 254 mm (10")                                 |  |  |  |                                  |  |  |  |  |                                  |                                  |
|   |  |   | 305 mm (12")                                 |  |  |  |                                  |  |  |  |  |                                  |                                  |
| Optional Outlets FLA  |  | 5A  |  |  |  |  |                                  |  |  |  |  |                                  |                                  |

Disclaimer: Technical Specifications may be subjected to further changes without prior notice.

\*Noise reading in open field condition / anechoic chamber. Noise reading in normal room varies by room size, layout, and background noise, but may reach roughly 3-4 dBA above these values.

\*\*Electrical power consumption is an measurement of new unit with clean filter operated within nominal setpoint. Result per unit may vary.

## TECHNICAL SPECIFICATIONS

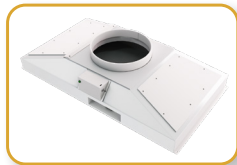
|  |  |   |  |                        |  |                        |  |
|--|--|---|--|------------------------|--|------------------------|--|
| Labculture® Class II                     | Stainless Steel Side Walls                   | 220-240 VAC, 50/60 Hz   | LA2-3S8 G4 8" 2011666                        | LA2-4S8 G4 8" 2011668  | LA2-5S8 G4 8" 2011670                        | LA2-6S8 G4 8" 2011672  |  |
|  |  |   | LA2-3S8 G4 10" 2011682                       | LA2-4S8 G4 10" 2011684 | LA2-5S8 G4 10" 2011686                       | LA2-6S8 G4 10" 2011688 |  |
|  |  |   | LA2-3S8 G4 12" 2011714                       | LA2-4S8 G4 12" 2011716 | LA2-5S8 G4 12" 2011718                       | LA2-6S8 G4 12" 2011720 |  |
|  | 110-130 VAC, 50/60 Hz                        | LA2-3S9 G4 8" 2011667   | LA2-4S9 G4 8" 2011669                        | LA2-5S9 G4 8" 2011671  | LA2-6S9 G4 8" 2011673                        |                        |  |
|  |  | LA2-3S9 G4 10" 2011683  | LA2-4S9 G4 10" 2011685                       | LA2-5S9 G4 10" 2011687 | LA2-6S9 G4 10" 2011689                       |                        |  |
|  |  | LA2-3S9 G4 12" 2011715  | LA2-4S9 G4 12" 2011717                       | LA2-5S9 G4 12" 2011719 | LA2-6S9 G4 12" 2011721                       |                        |  |
| Cabinet Construction                     | Main body                                    | Electro-galvanized steel with white oven-baked epoxy-polyester Isocide™ antimicrobial powder-coated finish, 1.5 mm (0.06") / 16 gauge thick |  |                        |  |                        |  |
|  | Work Zone                                    | Stainless steel type 304 with no.4 finish, 1.5 mm (0.06") / 16 gauge thick  |  |                        |  |                        |  |
|  | Sash Window                                  | 6 mm UV-absorbing Tempered Glass  |  |                        |  |                        |  |
| Net Weight                               | 243 Kg (536 lbs)                             |   | 287 Kg (633 lbs)                             |                        | 381 Kg (840 lbs)                             |                        | 400 kg (882 lbs)                             |
| Shipping Weight                          | 304 kg (644 lbs)                             |   | 360 kg (772 lbs)                             |                        | 451 kg (968 lbs)                             |                        | 506 kg (1116 lbs)                            |
| Shipping Dimensions, Maximum (W x D x H) | 1185 x 950 x 2120 mm (46.7" x 37.4" x 83.5") |   | 1490 x 950 x 2120 mm (58.7" x 37.4" x 83.5") |                        | 1950 x 950 x 2120 mm (76.8" x 37.4" x 83.5") |                        | 2200 x 950 x 2120 mm (86.6" x 37.4" x 83.5") |
| Shipping Volume                          | 2.3 m³ (81.2 cu. ft.)                        |   | 3 m³ (105.9 cu. ft.)                         |                        | 3.9 m³ (137.7 cu. ft.)                       |                        | 4.4 m³ (155.4 cu. ft.)                       |

## Options and Accessories

|   |                                      |   |                                       |   |  |
|---|--------------------------------------|---|---------------------------------------|---|--|
| Anti-blowback Valve 10 inches   | EG Powder-Coated                     | ANTI-BLOW BACK VALVE 10" ABBV-10P 5170352 |                                       |   |  |
|   | 304 Stainless Steel                  | ANTI-BLOW BACK VALVE 10" ABBV-10S 5170354 |                                       |   |  |
| Exhaust Collar  | ECO-F1-LA2/AC2/LR2/AR-3FT G4 5171097 | ECO-F1-LA2/AC2/LR2/AR2/VA2-4FT G4 5171098 | ECO-F1-LA2/AC2/LR2/AR2-5FT G4 5171099 | ECO-F1-LA2/AC2/LR2/AR2/VA2-6FT G4 5171100 |  |
| UV Lamp   | UV-15A (5170251)                     |   | UV-30A (5170255)                      |   |  |
| IV Bar  | IV-910 (5170499)                     | IV-1215 (5170231)                         | IV-1520 (5170500)                     | IV-1825 (5170501)                         |  |
| Electrical Outlet   | Direct Mounted                       | EO-H_                                     |                                       |   |  |
|   | GFCI                                 | EO-GFCI (5170071)                         |                                       |   |  |
| Service Fixtures  | EU SF-Gas-20 mm and Solenoid Valve   | SF-1G20 (5170410)                         |                                       |   |  |
|   | EU SF-Vacuum-20 mm                   | SF-1V20 (5170457)                         |                                       |   |  |
|   | EU SF-Air-20 mm                      | SF-1A20 (5170502)                         |                                       |   |  |
|   | EU SF-Nitrogen-20 mm                 | SF-1N20 (5170503)                         |                                       |   |  |
|   | EU SF-Water-20 mm                    | SF-1W20 (5170458)                         |                                       |   |  |
|   | US SF-Universal-20 mm                | SF-2U22 (5170504)                         |                                       |   |  |
|   | Copper Piping for SF                 | CU-Pipe (5170026)                         |                                       |   |  |
| Support Stand (705 to 915 mm with 50 mm increment / 28.0" to 36.0" with 2" increment, combination of caster wheels and leveling feet with lock) | STA-3A0 5131340                      | STA-4A0 5131341                           | STA-5A0 5131427                       | STA-6A0 5131389                           |  |
| Stainless Steel Pipette Storage Shelf   | 5260327                              |   |                                       |   |  |
| Arm Rest Padding  | MEWREST (5170127)                    |   |                                       |   |  |
| Foot Rest   | FT-REST (5170073)                    |   |                                       |   |  |
| Laboratory Chair  | ME-LD-AR360 (1150006)                |   |                                       |   |  |
| IQOQ Protocol   | 9010179                              |   |                                       |   |  |



ABBV\_



ECO-F-LA2-4 G4



UV\_ A-L



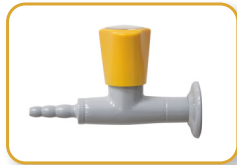
IV\_



EO-H\_



EO-GFCI



SF-1\_



SF-2U\_



STA\_



SS Pipette Storage Shelf



MEWREST



FT-REST



ME-LD-AR360



IQOQ

# ESCO

LIFESCIENCES GROUP

## Improving Lives Through Science

**DIRECT  
MANUFACTURER**



- Animal Research Workstation
- Biosafety Safety Cabinet
- CO<sub>2</sub> Incubator
- Ducted Fume Hood
- Ductless Fume Hood
- Filtered Storage Cabinet
- Laboratory Centrifuge
- Laboratory Oven and Incubator

- Laboratory Refrigerator and Freezer
- Laboratory Shaker
- Laminar Flow Cabinet
- PCR Cabinet
- PCR Thermal Cycler
- Powder Weighing Balance Enclosure
- Ultra-low Temperature Freezer

# ESCO

LIFESCIENCES

- Airflow Containment
- Cross-Contamination Facility Integrated Barrier
- Isolation Containment
- Ventilation Containment
- Radiopharmacy

- Adherent Cell Bioreactors
- Adherent Automated Cell Harvesting System
- Cell Culture Monitoring Tools
- Single-use Consumables for Bioprocessing



# ESCO

MEDICAL

- Time-Lapse Incubator
- Benchtop Incubator
- ART Workstation
- CO<sub>2</sub> Incubator
- Anti-Vibration Table
- Gas Analyser

# ESCO

ASTER

CRDMO Services



# ESCO LIFESCIENCES GROUP

42 LOCATIONS IN 21 COUNTRIES ALL OVER THE WORLD



-  Global Offices
-  Distributors
-  Factories
-  R&D Centers
-  Regional Distribution Centers

FOLLOW US ON SOCIAL MEDIA, DOWNLOAD OUR APPS,  
AND SCAN THE QR CODE FOR MORE INFO.



@EscoLifesciences



@EscoLifesciences



@EscoLifesci



@Esco



@EscoLifesciences



@EscoLifesciences



Esco Lifesciences



Esco Lifesciences

# ESCO

LIFESCIENCES GROUP

Esco Micro Pte. Ltd. • 19 Changi South Street 1 • Singapore 486779

Tel +65 6542 0833 • mail@escolifesciences.com

www.escolifesciences.com

Esco Technologies, Inc. • 903 Sheehy Drive, Suite F, Horsham, PA 19044, USA

Tel: +1 215-441-9661 • eti.admin@escolifesciences.com



Esco Lifesciences Group Offices: Bangladesh | China | Denmark | Germany | Hong Kong | India | Indonesia | Italy | Japan | Lithuania | Malaysia | Myanmar | Philippines | Russia | Singapore | South Africa | South Korea | Taiwan | Thailand | UAE | UK | USA | Vietnam